

NEBU LAB
PRODUCT DATA SHEET
FH-MO Astra Valve

Motorized water shutoff control for Astra systems

OVERVIEW

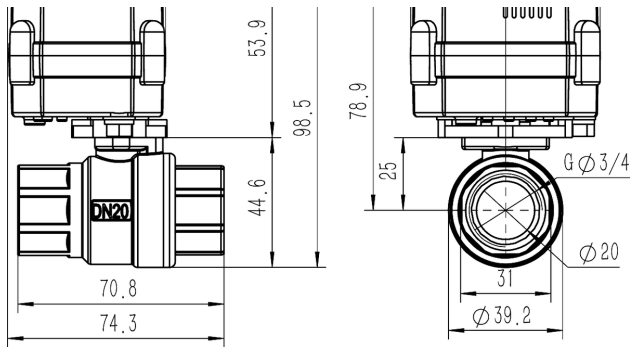
The FH-MO Astra Valve is a motorized ball valve used by the Astra system to support automated and manual water shutoff workflows. It integrates with Astra Panels, leak sensors, and site rules so water can be shut off when configured risk conditions are detected.

Astra Valve is offered in multiple plumbing vb sizes and connection configurations. This data sheet describes the representative 3/4 in. / DN20 model used in most Astra deployments; project-specific sizes may vary by installation requirements.

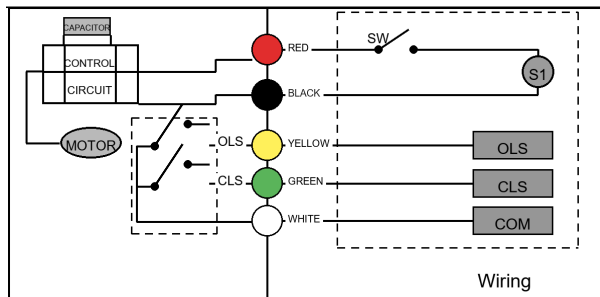
FEATURES

- Motorized ball valve for Astra water shutoff systems
- Normally closed actuator with auto-return behavior
- Available in multiple sizes for project-specific plumbing requirements
- Stainless steel ball valve body with PTFE seals
- IP67 ingress protection rating
- Manual override and position indication for service checks
- 5-wire connection for valve drive and position feedback
- Connector-ready cable assembly for field installation

Representative 3/4 in. / DN20 dimensions



Wiring Diagram



SPECIFICATIONS

Model	FH-MO
Representative size	3/4 in. / DN20
Available sizes	Project-specific sizes
Valve type	Motorized ball valve; NC auto return
Connection	NPT
Body / Seal material	Stainless / PTFE
Pressure rating	1 MPa - 145 psi
Ingress protection	IP67
Voltage input	9-24 V DC nominal
Wiring	5-wire
Local service features	Manual override; position indicator
Compliance	Model complies with CSA B125.3/ CSA B125.14, and NSF/ANSI/CAN 61

TYPICAL APPLICATIONS

- Automatic water shutoff for multi-unit residential Astra systems
- Riser, suite, utility-room, and equipment-area shutoff points
- Retrofit installations where panel-controlled shutoff is required

COMPLIANCE NOTES

The model complies with CSA B125.3/ CSA B125.14, and NSF/ANSI/CAN 61. Final installation must be performed by qualified personnel and verified against applicable plumbing codes, site conditions, and the approved valve size and thread configuration for the project.

WARRANTY

Nebulab Technologies Inc. warrants that for a period of 2 years from the date of purchase, this product is free from defects in material and workmanship. This warranty does not apply to damage caused by shipping or handling, or damage caused by accident, abuse, misuse, misapplication, ordinary wear, improper maintenance, failure to follow instructions or because of any unauthorized modifications. If there is a defect in materials and workmanship under normal use within the warranty period Nebulab Technologies Inc. shall, at its option, repair or replace the defective equipment upon return of the equipment to the original point of purchase. The foregoing warranty applies only to the original buyer and is in lieu of all other warranties, whether expressed or implied, and of all other obligations or liabilities on the part of Nebulab Technologies Inc. Nebulab Technologies Inc. neither assumes responsibility for, nor authorizes any other person purporting to act on its behalf to modify or to change this warranty. The maximum liability for Nebulab Technologies Inc. under all circumstances for any warranty issue shall be limited to a replacement of the defective product. It is recommended that the customer check their equipment on a regular basis for proper operation.